

IP Communication Terminal

IP100H

Remote Communicator

IP100FS

Controller

IP1000C

Full-Duplex Communication That Works Over a Wireless LAN and IP Networks*

- Easy system to set up and use
- Up to 100 users can communicate at the same time
- Encryption provides extra security
- Range is only restricted by your IP network coverage
- No licence fee required, no call charges

* Requires headset for full-duplex operation.



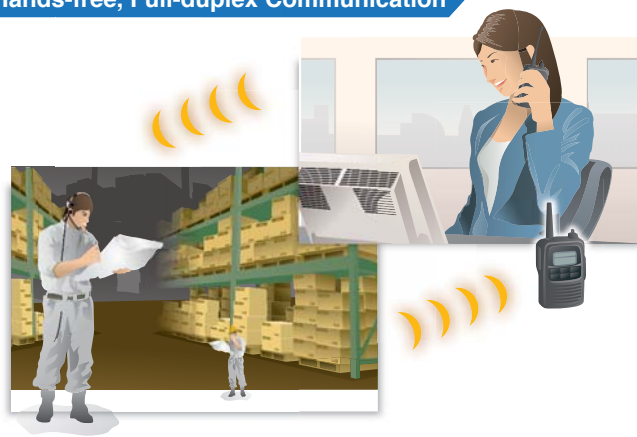
Wireless LAN System Extends Your Communication Coverage.

Individual, Group or Area Communication



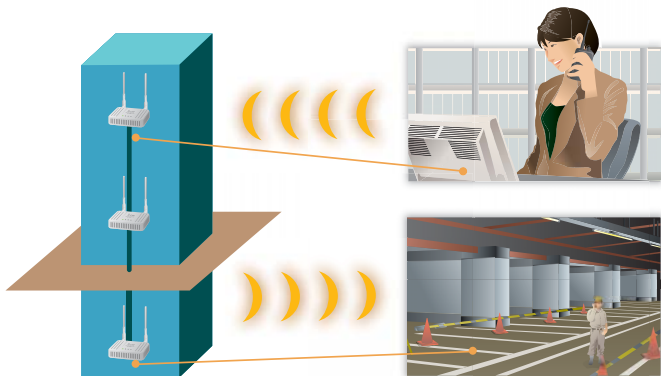
Staff spread across an extended site, such as a hotel, can communicate seamlessly.

Hands-free, Full-duplex Communication



With an optional headset, the IP100H user can talk and receive simultaneously like a phone call. Hands-free operation allows your staff to carry out other tasks at the same time.

Intra-building Communication



By deploying access points along the IP network, the IP advanced radio system can communicate all the way from the basement to the top floor. The IP100H can access the nearest access point and can roam between access points*. *Same SSIDs are required for roaming use.

Dispersed Sites Communication



If connected over an Internet VPN, the IP100H/IP100FS can communicate between dispersed sites such as offices or shops in different cities.

Application examples

Hotels

Warehouse / Manufacturing

Hospitals

Security

Restaurant / Drive Thru

Supermarkets / Retail Shops

IP Communication Terminal IP100H

- IPX7 waterproof (1m depth water for 30 minutes) for outdoor work or places prone to get wet.
- Compact 58x95x26.4 mm body and 205g (approximate) lightweight.
- Vibration alert function for incoming calls.



*The IP100H can be used with an internal antenna. (Communication range will decrease to half from/to access points.)



Wireless LAN Access Point AP-90M

- IEEE 802.11 a/b/g/n/ac compliant
- PoE (Power over Ethernet) capability



Remote Communicator IP100FS

(Supplied with USB flash drive for use as a USB hardware key)

- The IP100FS can communicate with IP communication terminals from a PC.
- The IP100FS can obtain location information of each IP100H based on using access points.
- Can be installed to a Windows® based tablet PC as well as laptop PC.



Controller IP1000C

- The IP1000C controls all terminal configurations and voice traffic.
- Capable of controlling up to 100 or 20* terminals (including IP100FS).

* Depending on version.



Full-duplex Communication

With an optional headset, the IP100H can talk and receive at the same time. All users in the system can communicate simultaneously.

High Security

The wireless LAN security protocols (WPA-PSK (TKIP/AES), WPA2-PSK (TKIP/AES)) encrypt your private conversation.

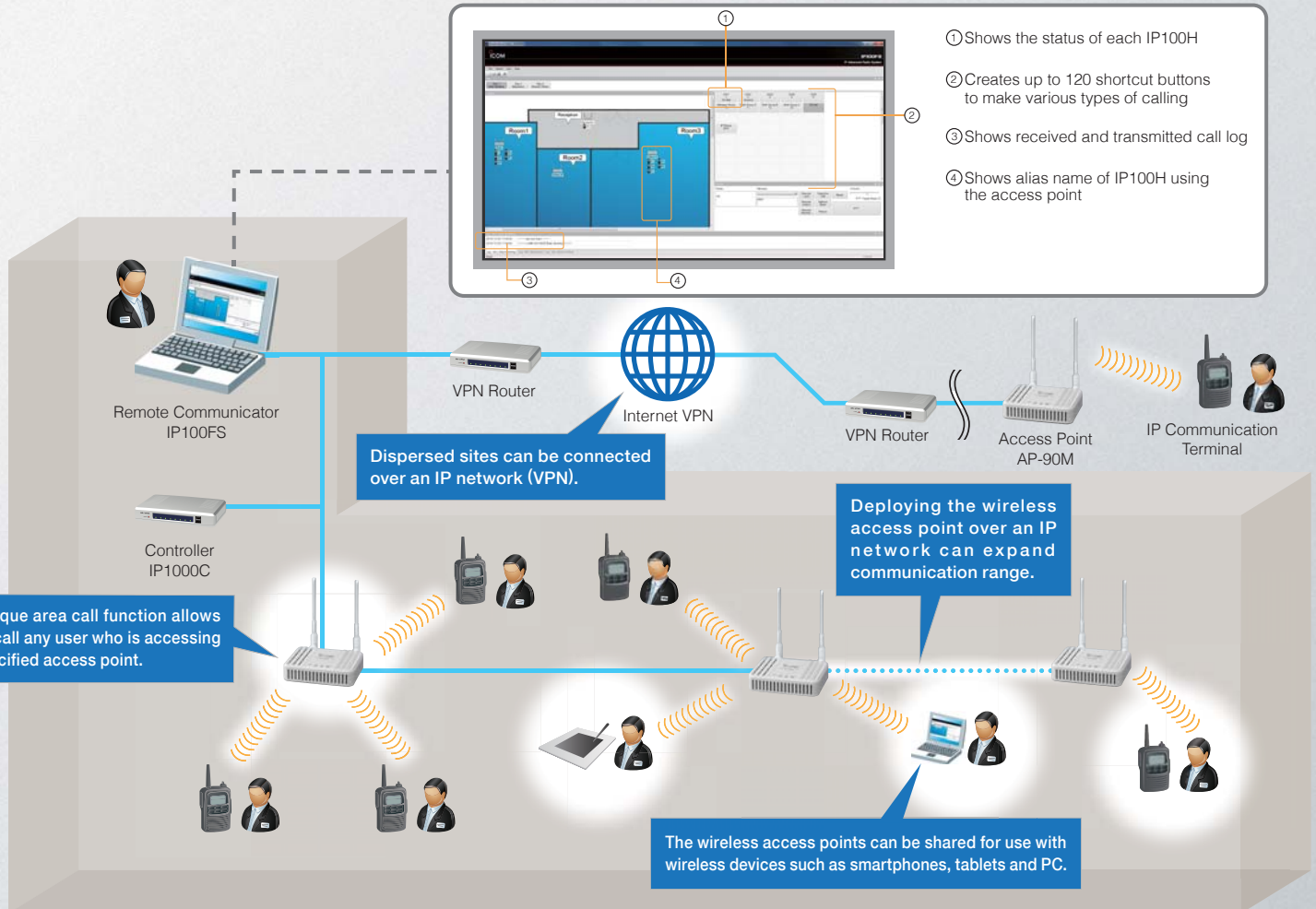
Status and Short Data Messaging

The IP100H/IP100FS can send status and short data messages* to other users.

* Pre-programmed message only for IP100H.

Easy System to Set Up and Use

The IP1000C programs almost all terminal configurations over the air. Individual PC programming via cable connection is not required. (Except initial setup)



RoIP GATEWAY

IP Phone and Transceiver Interconnection

With the VE-PG3 RoIP gateway, the IP advanced radio system can interconnect with an IP phone, analogue transceiver and IDAS™ NXDN™ digital transceiver.

When used with an IP phone system, the IP100H can be used as a phone handset for making internal or external calls.*

* For interconnection with other equipment, verification tests are required before the installation. The IP100H can call a preprogrammed phone number only. (Cannot push phone number to make a call.)

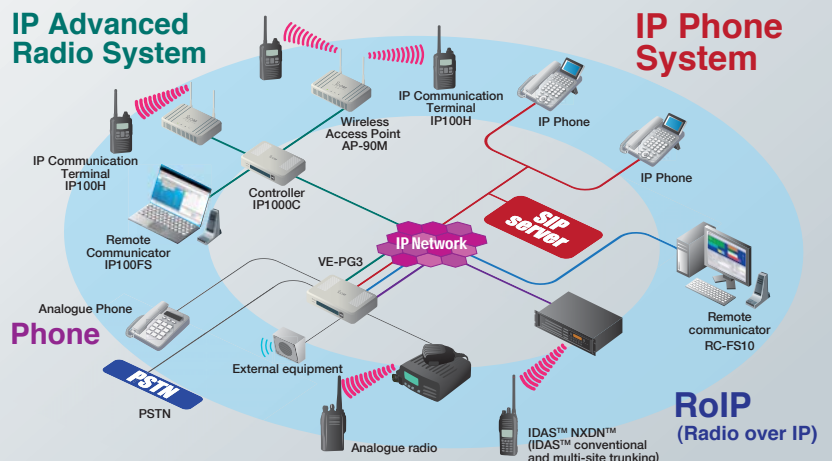


RoIP Gateway
VE-PG3

Interconnection image

The IP communication terminals, radios and telephones can communicate with each other within the doughnut shaped blue ring.

IP Advanced Radio System



IP Phone System

RoIP (Radio over IP)

IP ADVANCED RADIO SYSTEM

SPECIFICATIONS

IP100H

Wireless standards	IEEE 802.11 a/b/g/n
Dimensions (WxHxD) ¹	58x95x26.4mm (with BP-271)
Weight (approx.)	205g (with BP-271 and antenna)
Operating time ²	More than 20 hours (with BP-271)
RF output power	Less than 10mW/MHz
Voice Codec	G.711 μ -law (64kbps)
AF output power (10% distortion)	Internal SP 400mW (typ., 16 Ω), External SP 200mW (typ., 8 Ω)
Security	WEP (64/128-bit), WPA-PSK (TKIP/AES), WPA2-PSK (TKIP/AES)
Operating temperature	-10°C to +60°C

¹ Projections are not included. ² Tx: Rx: Stand-by=1:1:8 duty cycle

Supplied accessories

- BP-271 Li-Ion battery pack
- MB-127 belt clip
- Hand strap
- Antenna

IP100FS (System requirements)

- Antenna cap

Operating system	Windows® 8/Windows® 8.1 (32-bit/64-bit) Windows® 7 (32-bit/64-bit) SP1 or later, Windows Vista® (32-bit/64-bit) SP2 or later, Windows® XP (32-bit) SP3/(64-bit) SP2 or later (Except for Windows® RT)
CPU	Intel® Core™ 2 Duo Processor E6600/2.4GHz or better
Memory	2GB or higher
Hard disk space	1GB of disk space (for saving log files)
Audio	DirectSound compatible audio (Frequency response up to 20kHz, sampling rate 48kHz)
Display resolution	1920x1080 pixel recommended 1024x768 pixel minimum
Other	USB 2.0 port, 10Mbps or faster Ethernet interface, speaker, microphone or headset

IP1000C

Power supply	100-240V AC (With supplied AC adapter)
Operating temperature	0°C to +40°C
Dimensions (WxHxD) ³	232x168x38mm
Weight (approx.)	750g (Main unit only)
LAN	RJ-45 connector x 4 1000BASE-T/100BASE-TX/10BASE-T (Auto MDI/MDI-X)
USB	Standard A receptacles x2
Maintenance console	RS-232C (RJ-11) connector

³ Projections are not included.

Supplied accessories

- BC-207S AC adapter
- Cushion sheets
- Ferrite core

All stated specifications are subject to change without notice or obligation.

OPTIONS

For IP100H

Battery packs and case



BP-271
Li-Ion 7.4V/
1150mAh (min.),
1200mAh (typ.)



BP-272
Li-Ion 7.4V/
1880mAh (min.),
2000mAh (typ.)



BP-273
LR6 (AA)
batteries x3

Rapid charger



BC-202



BC-123S*
*BC-123SA for 120V AC,
SE for 230V AC.

Multi-charger



BC-157S



BC-211

Speaker-microphones



HM-186LS



HM-153LS



HM-166LS

Headsets



HS-94*
Earhook type



HS-95*
Behind-the-head type



HS-97*
Throat type

* Either OPC-2006LS or OPC-2328 is required when using any of these headsets.

Plug adapter cables



OPC-2006LS



OPC-2328
PTT switch cable

Belt clip



MB-127

Slim L-type plug adapter cable



OPC-2144
Required when using either
HS-85, HM-153, HM-166 or SP-13.

Setup cables



OPC-478UC



OPC-2144

Both cables are required for initial setup.

For IP100FS



CT-23
PTT microphone adapter



SM-26
Desktop microphone



HM-152
Hand microphone



OPC-1402
Serial cable

For IP1000C

Icom, Icom Inc. and the Icom logo are registered trademarks of Icom Incorporated (Japan) in the United States, the United Kingdom, Germany, France, Spain, Russia, Japan and/or other countries. IDAS and IDAS logo are trademarks of Icom Incorporated. NXDN is a trademark of Icom Incorporated and JVC KENWOOD Corporation. Windows and Windows Vista are either registered trademarks or trademarks of Microsoft Corporation in the United States and/or other countries. All other trademarks are the properties of their respective holders.

Icom Inc. 1-1-32, Kami-minami, Hirano-ku, Osaka 547-0003, Japan Phone: +81 (06) 6793 5302 Fax: +81 (06) 6793 0013

www.icom.co.jp/world

Count on us!

Icom America Inc.

12421 Willows Road NE,
Kirkland, WA 98034, U.S.A.
Phone: +1 (425) 454-8155
Fax: +1 (425) 454-1509
E-mail: sales@icomamerica.com
URL: <http://www.icomamerica.com>

Icom Canada

Glenwood Centre #150-6165 Highway 17,
Delta, B.C., V4K 5B8, Canada
Phone: +1 (604) 952-4266
Fax: +1 (604) 952-0090
E-mail: info@icomcanada.com
URL: <http://www.icomcanada.com>

Icom Brazil

Rua Itororó, 444 Padre Eustáquio
Belo Horizonte MG,
CEP: 30130-150, Brazil
Phone: +55 (31) 3582 8847
Fax: +55 (31) 3582 8987
E-mail: sales@icombrasil.com

Icom (Europe) GmbH

Communication Equipment
Auf der Krautweide 24
65812 Bad Soden am Taunus, Germany
Phone: +49 (6196) 76685-0
Fax: +49 (6196) 76685-50
E-mail: info@icom-europe.com
URL: <http://www.icomeurope.com>

Icom Spain S.L.

Ctra. Rubi, No. 88 "Edificio Can Castanyer"
Bajos A 08174, Sant Cugat del Valles,
Barcelona, Spain
Phone: +34 (93) 590 26 70
Fax: +34 (93) 589 04 46
E-mail: icom@icomspain.com
URL: <http://www.icomspain.com>

Icom Polska Sp. z o.o.

80-286 Gdansk, Jaskowa Dolina St. 75, Poland
Phone: +48 (58) 551 0484
Fax: +48 (58) 551 4720
E-mail: icom.polska@icom.polska.pl
URL: <http://www.icompolska.com.pl>

Icom (UK) Ltd.

Blacksole House, Altira Park,
Herne Bay, Kent, CT6 6GZ, U.K.
Phone: +44 (0) 1227 741741
Fax: +44 (0) 1227 741742
E-mail: info@icomuk.co.uk
URL: <http://www.icomuk.co.uk>

Icom France s.a.s.

Zac de la Plaine,
1 Rue Brindejone des Moulinais, BP 45804,
31505 Toulouse Cedex 5, France
Phone: +33 (5) 61 36 03 03
Fax: +33 (5) 61 36 03 00
E-mail: icom@icom-france.com
URL: <http://www.icom-france.com>

Icom (Australia) Pty. Ltd.

Unit 1 / 103 Garden Road,
Clayton, VIC 3168 Australia
Phone: +61 (03) 9549 7500
Fax: +61 (03) 9549 7505
E-mail: sales@icom.net.au
URL: <http://www.icom.net.au>

Icom New Zealand

146A Harris Road, East Tamaki,
Auckland, New Zealand
Phone: +64 (09) 274 4062
Fax: +64 (09) 274 4708
E-mail: inquiries@icom.co.nz
URL: <http://www.icom.co.nz>

Asia Icom Inc.

6F No. 68, Sec. 1 Cheng-Teh Road,
Taipei, Taiwan, R.O.C.
Phone: +886 (02) 2559 1899
Fax: +886 (02) 2559 1874
E-mail: sales@asia-icom.com
URL: <http://www.asia-icom.com>

Shanghai Icom Ltd.

No.101, Building 9, Caifuxingyuan Park,
No.188 Maoting Road, Chedun Town,
Songjiang District, Shanghai, 201611, China
Phone: +86 (021) 6153 2768
Fax: +86 (021) 6765 9987
E-mail: bjicom@bjicom.com
URL: <http://www.bjicom.com>

Your local distributor/dealer: