



# MOTOTRBO TWO-WAY RADIO SOLUTIONS AT A GLANCE

# MOTOTRBO™

A COMPLETE END-TO-END SOLUTION

## RADIOS

From simple voice-only models to feature-rich voice and data radios



## ACCESSORIES

Our complete portfolio of accessories optimises the performance of your MOTOTRBO radio



## SYSTEMS

MOTOTRBO offers a wide range of systems that can evolve with your business



## INFRASTRUCTURE

Repeaters, controllers and gateways are the backbone of your MOTOTRBO two-way radio system



## APPLICATIONS

Leverage data applications from our application developer program to enhance your communications



## SERVICES

We've got you covered, from pre-installation to post-implementation, with expert support



## CONSOLES & MANAGEMENT

Centralise management of your radio network and workforce for effective, efficient communications

DISCOVER THE ULTIMATE IN  
SEAMLESS OPERATIONS WITH  
A TOTAL MOTOTRBO SOLUTION

Having MOTOTRBO at the heart of your organisation will help you achieve new levels of productivity, safety and efficiency. The extensive portfolio means you can custom-build your complete solution including radios, infrastructure, systems, accessories, applications and services designed around what you need today and in the future.

### **INSTANTANEOUS PTT COMMUNICATION**

Nothing is faster than push-to-talk (PTT) when you need a quick answer or immediate emergency response. It provides real time communication for individuals or groups across your entire team from the control room to the front-line, resulting in loyal customers, satisfied employees and increased business.

### **HEAR AND BE HEARD CLEARLY IN NOISY ENVIRONMENTS**

Superb audio quality means MOTOTRBO delivers crystal-clear communications. The Intelligent Audio feature automatically adjusts radio volume up and down in response to the level of noise in the workplace. And with MOTOTRBO's background noise suppression, you can be confident communication is loud and clear.

### **REACH YOUR WORKFORCE WHEREVER THEY GO**

Hear calls clearly over a greater range. MOTOTRBO features advanced digital signal processing to deliver voice integrity and clarity to the limits of coverage. And thanks to DMR TDMA technology, MOTOTRBO delivers twice the call capacity of analogue radios so more workers can use voice and data, without worrying about privacy or interference.

### **KEEP COMMUNICATING FOR LONGER**

Because MOTOTRBO radios use much less power in digital mode than analogue, batteries last significantly longer on a single charge.

### **CHOOSE THE RIGHT SOLUTIONS FOR THE RIGHT USERS**

Whether you want ultra-light portables or extra-tough mobiles, integrated Bluetooth® and Wi-Fi® or industry-leading data applications, MOTOTRBO has the right devices and systems to fit your workforce now, and enables you to evolve as your enterprise grows.

### **MOVE FROM ANALOGUE TO DIGITAL WITH EASE**

Migrate at your own pace, one talk group or department at a time. MOTOTRBO radios operate in both analogue and digital mode, so you can use them on your existing legacy system and move to digital when you're ready – all while running operations smoothly.

### **GET ADVANCED CAPABILITIES AND BUSINESS-CRITICAL FEATURES**

MOTOTRBO has innovative features such as Transmit Interrupt, which lets you prioritise communication the moment it's needed. Man Down and Lone Worker applications call for help when personnel can't. Location tracking monitors vehicles, assets and the user in real time.

### **LEVERAGE EXPERT APPLICATIONS THAT GET THE JOB DONE EFFICIENTLY**

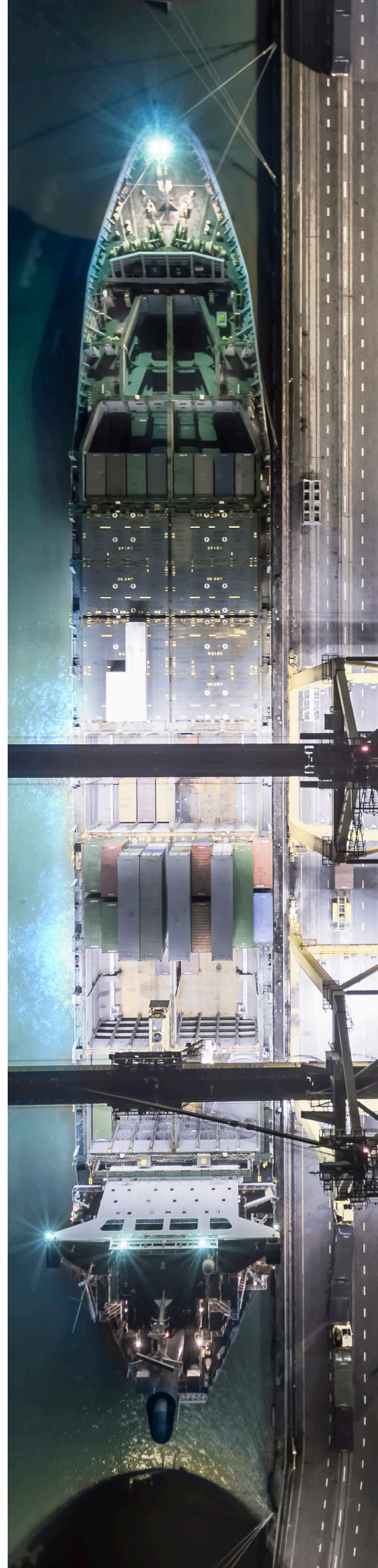
MOTOTRBO fits the way businesses run today, with an expert Application Developer Programme that helps you customise your communication solution to your environment and workforce. Solutions range from text messaging, centralised dispatch and GPS/GLONASS tracking to personnel monitoring and work order ticket management. Applications like these make it easier to accomplish multiple tasks on a single purpose-built device.

### **KEEP CONNECTED WHEN CONDITIONS ARE TOUGHEST**

MOTOTRBO is made to last. We design and engineer MOTOTRBO products to survive the harsh conditions of everyday business. The rugged, waterproof and intrinsically safe radios endure rigorous Accelerated Life Testing (ALT) which simulates up to 5 years of field use.

### **REACH EVERYONE, ANYWHERE**

When you're running a professional operation, you need more than just radio-to-radio communications. MOTOTRBO has coverage options to suit your needs whether you're operating in a single building, a large campus, or even multiple locations around the world. Connecting thousands of radio and smartphone users, your capacity options are virtually unlimited.





## PORTABLE AND MOBILE RADIOS

The MOTOTRBO two-way radio portfolio offers you a wide choice of devices, from simple voice-only models to feature-rich voice and data radios. All devices work together seamlessly to deliver advanced features to enhance your safety, productivity and efficiency. With exceptional voice quality and outstanding usability, MOTOTRBO keeps your workforce connected.



## PORTABLE AND MOBILE RADIOS

### DP1400

#### SIMPLE VOICE COMMUNICATIONS FOR THE EVERYDAY USER WHO WANTS TO STAY CONNECTED

Communicate simply and clearly. The DP1400 gives you affordable analogue voice communications, with the option to upgrade to MOTOTRBO digital when you're ready. With great performance and rugged durability, the DP1400 simply keeps your workforce connected.

**COMPATIBLE WITH:**  IP SITE CONNECT  CAPACITY PLUS  CAPACITY MAX



### SL1600

#### SLIM AND STYLISH, FOR THE USER WHO NEEDS EASY CONNECTIVITY

Discover freedom with this slim, lightweight radio. An eye-catching Active View display combines ruggedness with simplicity, and patented Range Max technology delivers great coverage with long battery life in a small, convenient form factor. The radio supports analogue and digital modes, and is complemented by a range of innovative accessories.

**COMPATIBLE WITH:**  IP SITE CONNECT  CAPACITY PLUS  CAPACITY MAX



### DM1000 SERIES

#### SIMPLE VOICE COMMUNICATIONS FOR THE EVERYDAY USER WHO WANTS TO STAY CONNECTED

The DM1400 and DM1600 mobile radios allow drivers and control room staff to communicate without distraction. Great performance and a straightforward user interface mean they are ideal to keep your workforce connected simply and cost-effectively.

**COMPATIBLE WITH:**  IP SITE CONNECT  CAPACITY PLUS  CAPACITY MAX



### DP2000e SERIES

#### COMPACT AND CAPABLE, FOR THE BUSY WORKER WHO NEEDS TO COMMUNICATE EFFICIENTLY

The DP2000e Series offers a feature-set geared to maximum workplace efficiency. Enhanced audio quality, impressive battery life, Intelligent Audio and voice announcement give easy, effective communication in challenging environments. Includes both analogue and digital capabilities so you can transition to digital when you're ready. A TIA4950-certified version is also available for use in hazardous environments<sup>1</sup>.

**COMPATIBLE WITH:**  IP SITE CONNECT  CAPACITY PLUS  CAPACITY MAX





## PORTABLE AND MOBILE RADIOS

### SL2600

#### INSTANT COMMUNICATION, PROFESSIONAL STYLE

Slim, lightweight, and discreet, the MOTOTRBO SL2600 portable two-way radio gives you the power of instant two-way communication without compromising your style. Get quick access to key radio functions along with information at a glance. Connect discreetly to Bluetooth earpieces and sensors and access Wi-Fi networks for over-the-air software updates.

**COMPATIBLE WITH:**  IP SITE CONNECT  CAPACITY PLUS  CAPACITY MAX



### DM2600

#### AFFORDABLE VOICE COMMUNICATIONS FOR THE BUSY PROFESSIONAL

The power of digital is within reach. The DM2600 mobile radio features voice systems capability, twice the calling capacity and clearer voice communications. With Intelligent Audio, drivers don't need to adjust radio volume to avoid missing a call: the DM2600 monitors background noise and automatically adjusts itself.

**COMPATIBLE WITH:**  IP SITE CONNECT  CAPACITY PLUS  CAPACITY MAX



### DP3000e SERIES

#### BIG PERFORMANCE FROM A SMALL, RUGGED AND WATERPROOF RADIO

Incredibly compact and exceptionally rugged, the MOTOTRBO DP3000e Series is the perfect solution for the professional on the move. It fits comfortably in your hand, integrates voice and data seamlessly and is loaded with all the benefits of the latest digital technology – superb audio quality, amazing voice clarity, outstanding coverage, long-lasting battery life and more: all packaged in a robust and waterproof IP68-rated form factor. A TIA4950-certified version is also available for use in hazardous environments<sup>1</sup>.

**COMPATIBLE WITH:**  IP SITE CONNECT  CAPACITY PLUS  CAPACITY MAX



### DP4000e SERIES

#### POWERFUL AND SOPHISTICATED, FOR THE PROFESSIONAL WHO REFUSES TO COMPROMISE

When you need complete connectivity, the DP4000e Series delivers. These portable radios offer a full set of features and rich functionality in one powerful device including superb audio quality, long battery life, full colour display, built-in Bluetooth 4.0, integrated Wi-Fi, GPS/GLONASS and text messaging. A TIA4950-certified version is also available for use in hazardous environments<sup>1</sup>.

**COMPATIBLE WITH:**  IP SITE CONNECT  CAPACITY PLUS  CAPACITY MAX





## PORTABLE AND MOBILE RADIOS

### SL4010e

#### SLEEK AND SMART, FOR A STYLISH WAY TO ACHIEVE COMPLETE CONTROL

Stay in control with the ultimate in professional digital communications. This slim and light portable radio is packed with features to help you direct operations. From integrated Wi-Fi and Bluetooth 4.0, to a user interface designed for the latest workforce management applications, the SL4010e has everything you need to boost safety and productivity.

**COMPATIBLE WITH:**  IP SITE CONNECT  CAPACITY PLUS  CAPACITY MAX



### DP4000 Ex SERIES

#### SPECIALISED PRODUCTS FOR POTENTIALLY EXPLOSIVE LOCATIONS

DP4000 Ex Series portable radios are ATEX and IEC Ex certified for use in potentially explosive environments where flammable or explosive gas, vapor or dust may be present. They have a comprehensive feature set, and have blue colouring for easy identification. The radios are available with a dedicated portfolio of ATEX certified accessories.

**COMPATIBLE WITH:**  IP SITE CONNECT  CAPACITY PLUS  CAPACITY MAX



### MOTOTRBO ION

#### OUR FIRST BUSINESS-READY COMMUNICATION DEVICE WITH ALWAYS-ON VOICE AND BROADBAND DATA CAPABILITIES

MOTOTRBO Ion brings together renowned PTT performance, an open app ecosystem on the Android platform, and access to our unified technology ecosystem – from video security and analytics solutions, to best-in-class network security, to powerful new software and technology services like smart virtual assistants.

**COMPATIBLE WITH:**  IP SITE CONNECT  CAPACITY PLUS  CAPACITY MAX



### DM4000e SERIES

#### POWERFUL AND SOPHISTICATED, FOR THE PROFESSIONAL WHO REFUSES TO COMPROMISE

The DM4000e Series offers a full set of features and rich functionality in one powerful device. It delivers analogue and digital modes, excellent range, superb audio quality, optional full colour display, integrated Bluetooth 4.0 and Wi-Fi, GPS/GLONASS, text messaging and expert applications customised to your business.

**COMPATIBLE WITH:**  IP SITE CONNECT  CAPACITY PLUS  CAPACITY MAX



UL HazLoc models available

= Optional

<sup>1</sup>Within the EU, radios and accessories must be ATEX certified for use in potentially explosive environments



## RADIO ACCESSORIES

From discreet earpieces to efficient battery solutions, our complete portfolio of accessories optimises the performance of your MOTOTRBO radio. They are designed to help you perform your best, wherever you work, and unleash the power of the industry's most advanced digital radio platform.

### EARPIECES

Transmit and receive discreetly with a variety of earpieces that feature a streamlined design and rugged cables that withstand tough conditions. With in-line push-to-talk and microphones, they're easy to use on the go. Our flexible array of surveillance kits includes two-wire kits (one wire for receiving, one wire for transmitting) and more discreet three-wire kits (separate wires for transmitting, receiving and push-to talk).



### HEADSETS

Protect hearing and facilitate communications in noisy environments. Select from a wide range of comfortable, durable, lightweight to heavy duty headsets with noise-canceling boom microphones and in-line push-to-talk.



### BLUETOOTH WIRELESS FOR PORTABLE AND MOBILE RADIOS

Unleash the power of your MOTOTRBO radio without wires getting in the way. Our extensive suite of Bluetooth accessories free you to take the radio off your belt, leave your vehicle or step away from your desk and stay connected up to 100m (300 feet) away. Choose from a variety of earpieces, heavy duty wireless headsets and push-to-talk solutions that let you move without constraints around the workplace.







## RADIO ACCESSORIES

### BATTERIES AND CHARGERS

Motorola Solutions develops and tests our batteries for optimal performance with MOTOTRBO radios and they outperform other brands of batteries. IMPRES™ batteries can be charged 150 additional times versus a standard battery – a 43% increase in charge cycles. IMPRES Over the Air Battery Management automatically collects battery information over the air while radios are in use, making battery management easier than ever.



### REMOTE SPEAKER MICROPHONES (RSMs)

Communicate clearly in loud workplaces. MOTOTRBO RSMs have exclusive audio features like Windporting for windy outdoor environments and noise-cancelling to reduce background noise. Exclusive IMPRES technology ensures your voice is heard loudly and more clearly over a wide range of conditions and the INC RSM suppresses extreme noise from high decibel equipment and heavy machinery so you can be heard above all.



### MOBILE RADIO MICROPHONES

Choose microphones designed to keep workers safely connected on the move. Keypad microphones let you easily navigate menus on your radios, dial phone numbers and send text messages. The heavy-duty microphone is easy to use while wearing gloves, and the telephone style handset is ideal for discreet communication. The Long Range Wireless Remote Speaker Microphone allows you to stay in touch even on remote job sites when you depend on your mobile radio but have to work outside your vehicle.



### CARRY SOLUTIONS

Carrying cases are available in sizes designed to fit your radio and battery and permit audio to be heard clearly. Our carry accessories keep your hands free, so you can concentrate on the task at hand. Choose from a wide range of nylon cases, leather cases, straps, holsters and clips, all designed to keep your radio protected, yet still easy to access.



### INSTALLATION AND MOUNTING KITS

Mount your radio on a desk or in your vehicle without compromising safety. Mounting kits give you the flexibility to mount the radio under or in your dashboard, or in the boot or under a seat when dash space is limited.





## SYSTEMS

No matter how large or small your enterprise, MOTOTRBO offers a wide range of systems specifically designed for your business – for the days ahead and the years beyond. You get the best of two-way radio with digital technology, and can enjoy integrated voice and data communication, increased capacity, enhanced features and exceptional voice quality, across the city and around the globe.





## SYSTEMS

### **DIRECT MODE / DUAL CAPACITY DIRECT MODE**

#### **TALK DIRECTLY BETWEEN RADIOS WITHOUT ANY INFRASTRUCTURE**

The most basic systems that allow portable and mobile radios to communicate directly with no infrastructure. Dual Capacity Direct Mode is available only on digital channels and supports two simultaneous voice/data paths while Direct Mode supports one analogue or digital voice channel.



### **CONVENTIONAL**

#### **BASELINE SINGLE SITE COVERAGE AND CAPACITY**

A conventional system is a step up from basic radio-to-radio communications. Radios communicate via a high-power repeater, giving better coverage and more centralised control.



### **IP SITE CONNECT**

#### **COVERAGE FOR MULTIPLE SITES**

Use your IP network to extend the voice and data capabilities of MOTOTRBO by linking repeaters together. You can create a continuous network that covers employees at 15 geographically-dispersed locations. You can also link up to 15 repeaters to create wide area coverage or enhance coverage quality at a single site.



### **CAPACITY PLUS**

#### **COVERAGE AND CAPACITY FOR SINGLE AND MULTIPLE SITES**

Expand the capacity and extend the coverage of MOTOTRBO with this innovative digital trunking system. With multi-site Capacity Plus (formerly Linked Capacity Plus) you can connect up to 15 sites, each with up to 8 voice and data repeaters plus up to 12 dedicated data repeaters.



### **CAPACITY MAX**

#### **COVERAGE, CAPACITY AND CONTROL FOR SINGLE AND MULTIPLE SITES**

DMR Tier III compliant trunking, plus more. MOTOTRBO Capacity Max blends advanced design with Motorola Solutions' extensive real-world experience of trunked radio systems to deliver a scalable communications solution that's perfect for your business.





## INFRASTRUCTURE

Repeaters, controllers and gateways are the backbone of your MOTOTRBO two-way radio system. They ensure your radio network is available at all times and that communications are clear, reliable and secure across your enterprise.

A repeater brings many benefits to your workplace communications. With high transmitter power and a sensitive receiver, your coverage area is significantly boosted. The digital error correction capability within the unit also improves voice quality. And with the MOTOTRBO repeater IP interface, you can more efficiently implement operations-critical applications such as Work Order Ticketing, GPS Dispatch Consoles and Telephone Interconnect. MOTOTRBO repeaters support both analogue and digital signalling and can automatically switch modes when operating in mixed fleets.

Controllers and gateways expand the capabilities and reach of your communications network to boost functionality and expand coverage by connecting your MOTOTRBO system to other devices such as smartphones and tablets.





## INFRASTRUCTURE

### SLR 1000 REPEATER

Using the SLR 1000 repeater, you can easily extend the range of your network through dead zones and across remote locations so everyone's within reach. Deploy the SLR 1000 indoors or out – it's IP65-rated for dust and water protection. The compact size gives you more installation options. And a low power, fanless design uses less space and energy.



### SLR 5500 REPEATER

The SLR 5500 offers high performance, high efficiency and a design for the future. The repeater has a 50 W continuous-duty output and high sensitivity for optimum coverage, plus high reliability and low power consumption for low cost of ownership. With a slim, modular design, the SLR 5500 is easy to install and service.



### SLR 8000 REPEATER

The SLR 8000 repeater packs up to 100 W continuous-duty operation into a case that is only 2U in height. It features high sensitivity for exceptional coverage and the modular design keeps reliability high while allowing for configurable options.



### CAPACITY MAX SYSTEM SERVER

Part of the Capacity Max trunking solution, the System Server hosts control and management functions. Each server can support up to 100 talkpaths. Redundant servers can be provisioned to increase system resilience.



### WAVE GATEWAY

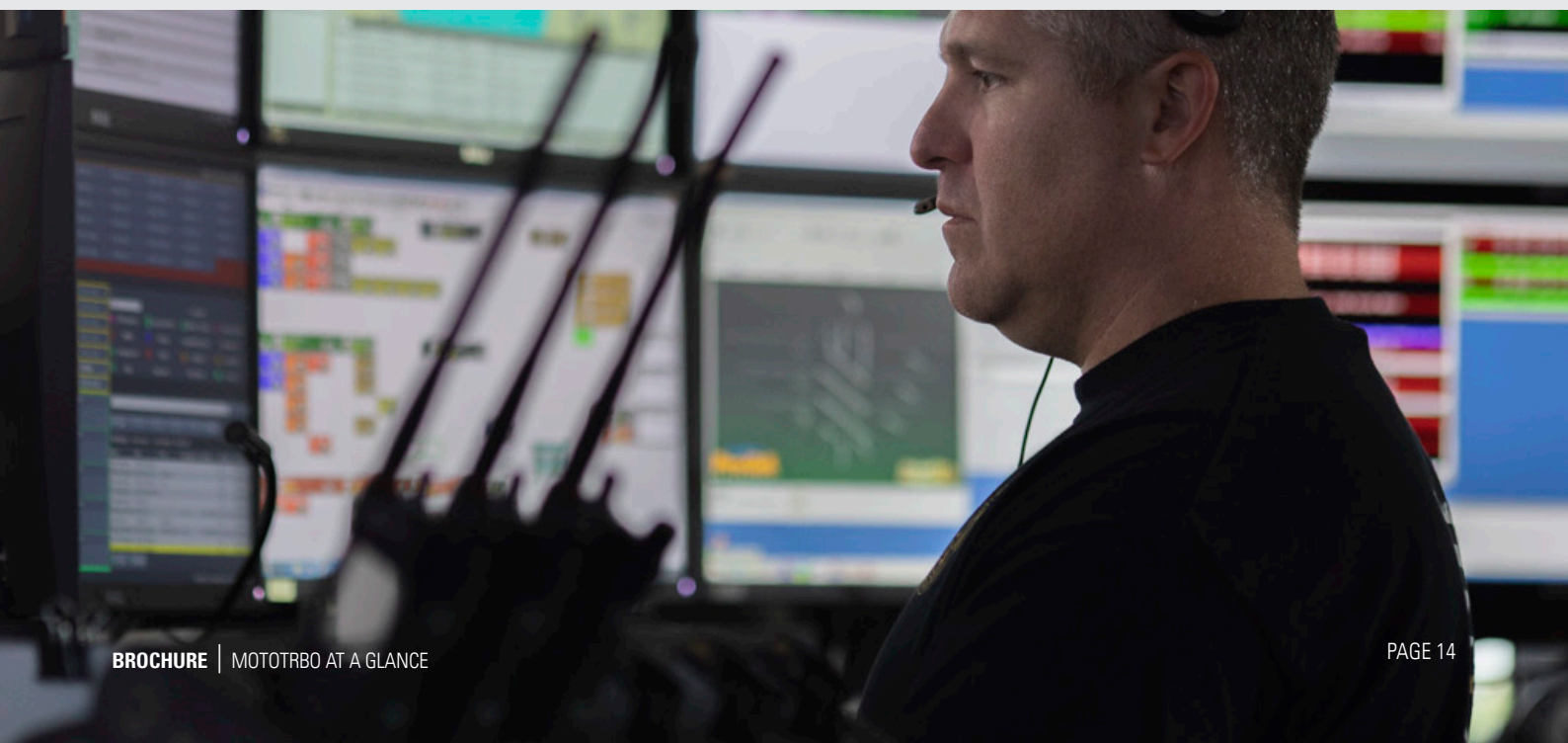
Get WAVE broadband PTT without the startup costs or maintenance that come with servers installed in your facility. Cloud-based WAVE deployments use a simple WAVE Gateway to connect MOTOTRBO Capacity Plus or Capacity Max systems to our WAVE servers in our secure data center.





## APPLICATIONS

With a wide range of applications and an expert application partner programme, MOTOTRBO offers custom solutions that truly meet your business needs. Business-specific applications like these increase the level of efficiency, safety and productivity throughout your enterprise.



## APPLICATIONS



### COMMAND AND CONTROL

These applications work behind the scenes of your MOTOTRBO network to enhance the efficiency and responsiveness of your system. Interfacing to a Work Order Ticketing system, managing alarms and telemetry, and connecting to other messaging systems, they bring significant benefits to your business.



### PERSONNEL SAFETY

Increase the safety and accountability of your staff by deploying these applications. Features such as Man Down and Lone Worker can be linked to indoor and outdoor location services for maximum effectiveness.



### INTEROPERABILITY

Connect your MOTOTRBO radio system to other communication systems. From analogue two-way radio systems to SIP telephone networks or cellular providers, you can increase efficiency and increase collaboration.



### LOCATION

Track your vehicles and your staff for improved safety, security and accountability. These applications allow you to make the most of MOTOTRBO's GPS and GLONASS capabilities, and some even offer indoor location tracking capabilities.



### SYSTEM MONITORING

To get the best from your MOTOTRBO system, you need to know how it's performing. These applications give you a dashboard view of key metrics and parameters, with detailed logs helping you plan future growth and upgrades.



### TEXT MESSAGING AND EMAIL

Enhance productivity by connecting your radio network with your text and email system. Allow your staff to use advanced work order ticketing solutions, or simply streamline the flow of information between office and shop floor.



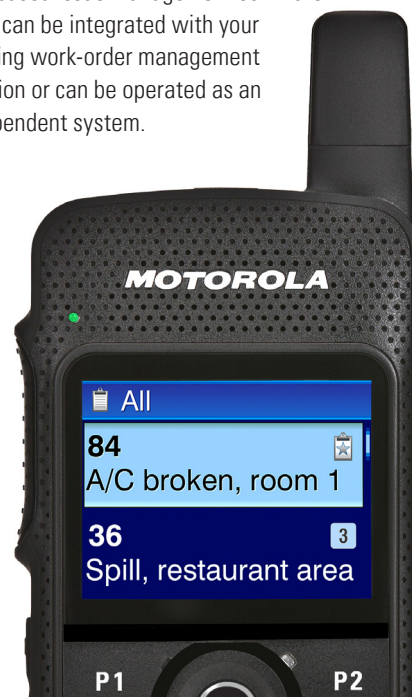
### VOICE DISPATCH

Giving you centralised control of your workforce, these applications offer customisable user interfaces to allow your dispatcher to coordinate your staff efficiently and effectively. They also enhance business connectivity by allowing telephony interconnections and multi-system patching.



### WORK TICKET MANAGEMENT

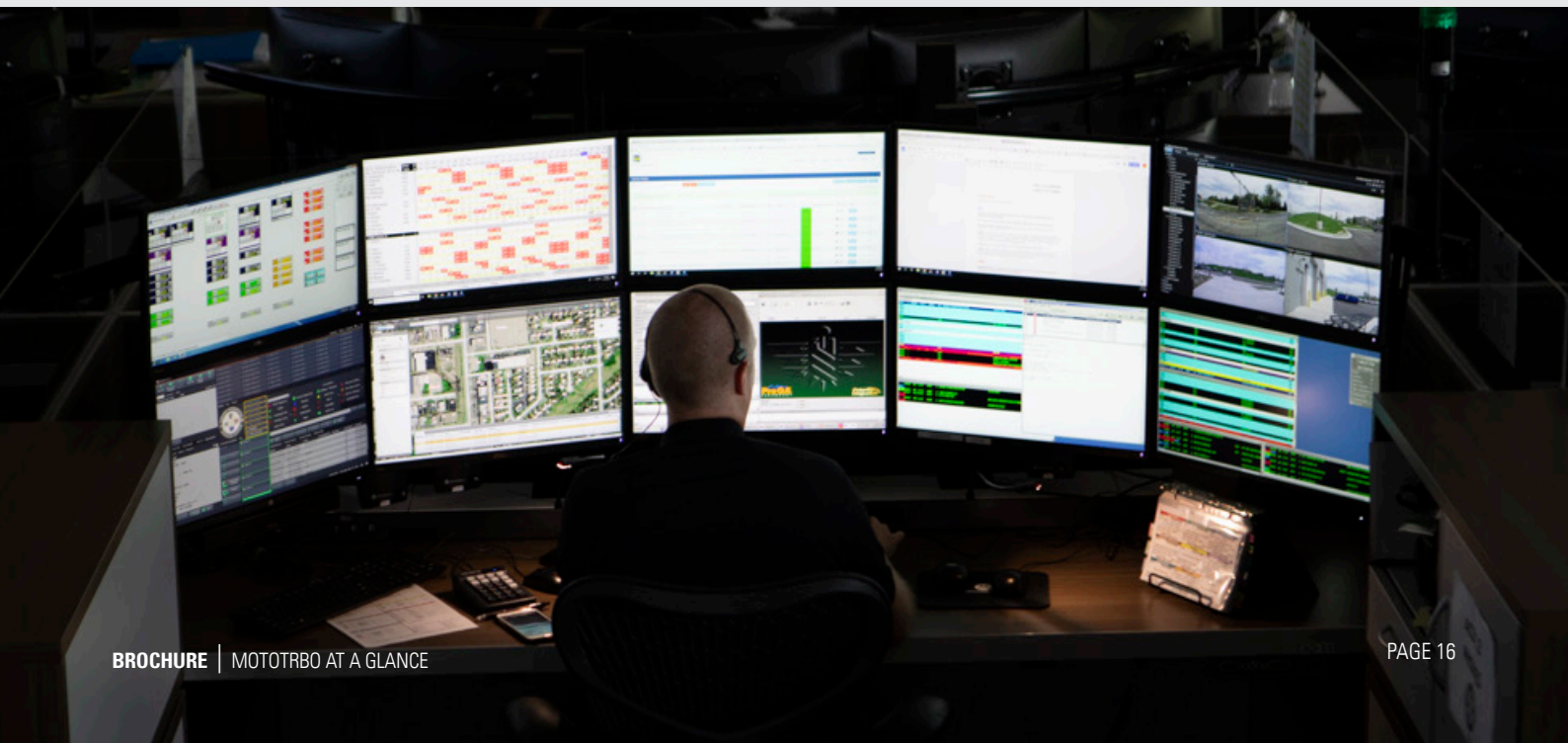
These applications enhance efficiency and accountability in the workplace using text-based issue management software. They can be integrated with your existing work-order management solution or can be operated as an independent system.





## CONSOLES & SYSTEM MANAGEMENT

With options designed for your business, this portfolio of dispatch consoles and system management applications has the features you need to make quick decisions, mobilise a fleet and keep teams informed.







## CONSOLES & SYSTEM MANAGEMENT

### AVTEC SCOUT

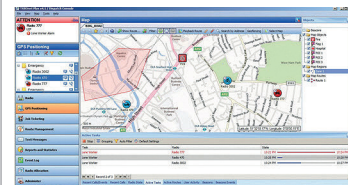
Avtec Scout is a true VoIP console system: all its components can be distributed over a LAN/WAN using standard Ethernet connections. The system uses a wireline interface to connect with MOTOTRBO systems, for increased functionality, call capacity and system reliability.

Avtec Scout provides a dedicated media workstation that allows dispatchers to operate on standard hardware for reduced costs and radio and telephony integration are also supported.



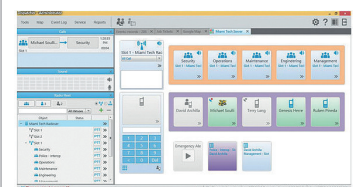
### TRBOnet PLUS

TRBOnet PLUS is an IP-based dispatch application that enables users to fully control and manage all available resources. The software includes a wide range of advanced features and functions to extend capabilities beyond basic dispatch. Text messaging, voice recording, telephone interconnect and many other features all combine to boost communication efficiency.



### SmartPTT PLUS

SmartPTT PLUS is a dispatch software application for distributed MOTOTRBO radio networks. Standard functionalities include voice dispatch, texting, job ticketing, event logging and more. Optional features include GPS tracking, indoor location, voice recording, interoperability, telephone interconnect and a web client for remote system access. SmartPTT PLUS supports both the digital functions of the MOTOTRBO radios or their analogue mode for a seamless migration to a DMR system.



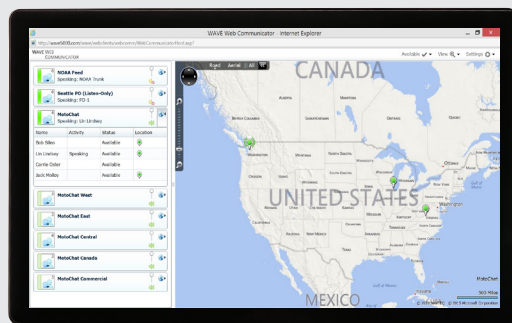
# WAVE PTX™ NETWORK-INDEPENDENT BROADBAND

WAVE PTX is a subscription-based group communication service that instantly connects your team at the push of a button across different devices, networks and locations. Install the app on your existing mobile devices or purchase dedicated WAVE PTX radios.

## WAVE PTX APPLICATIONS ENABLE YOUR WORKFORCE TO CONNECT AND COLLABORATE



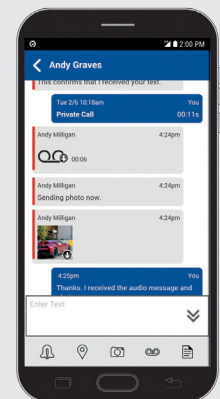
TLK 100



WAVE PTX Dispatch is web-based and provides centralised management for your teams.



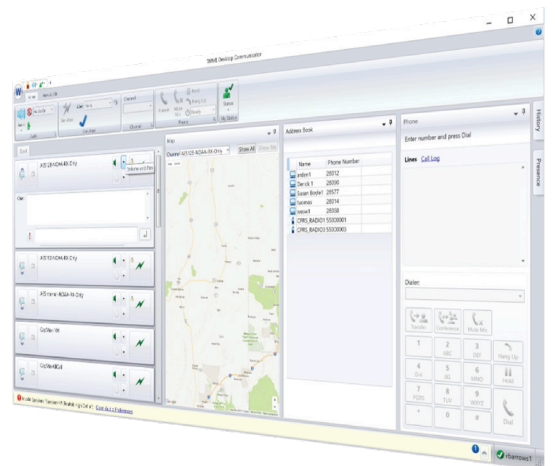
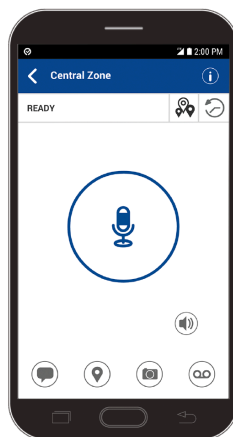
TLK 150



WAVE PTX Mobile App turns your phone into a PTT handset that incorporates instant voice, photos, video and more into a single communication session.



## WAVE PTX BROADBAND PUSH-TO-TALK



### TAKE PTT FURTHER



#### COMMUNICATE WITHOUT BOUNDARIES

Eliminate barriers between devices, networks and locations, and let everyone be part of the conversation.



#### SEAMLESSLY EXTEND RADIO COMMUNICATION

Extend your private and group calls to broadband with a direct wireline connection.



#### CLOUD HOSTED

No servers to buy, install or maintain so you can focus on your business.



#### ON PREMISES

Take control of your communication with enterprise-grade equipment installed on-site.



## SERVICES

Ensure and maintain the robust performance of your MOTOTRBO radios with a complete suite of services. We've got you covered, from pre-installation to post-implementation, with expert support to make sure your business runs without interruption, disruption or unplanned downtime.



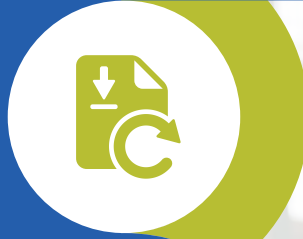
## SERVICES FOR MOTOTRBO TWO-WAY RADIOS

Critical communication has become increasingly complex as your MOTOTRBO two-way radios become more IP-based, supporting integrated data applications and enhanced features. Rely on us to help you achieve your performance targets with the right level of service you need for your radio fleet.

# ENHANCED, ESSENTIAL, AND ADVANCED SERVICES FOR MOTOTRBO TWO-WAY RADIOS AND INFRASTRUCTURE

Motorola Solutions is enhancing the MOTOTRBO platform with new service packages that include access to software updates, premium software features and extended hardware repair services. Your business's security and technology needs are rapidly evolving, and we want to make sure you have a world-class experience each and every time you use your MOTOTRBO products.

These new service packages bring three key benefits to your MOTOTRBO platform

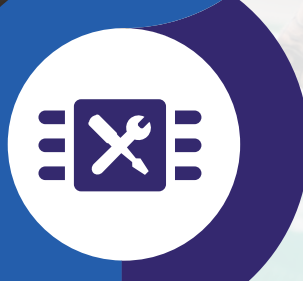


### The Value of Software Updates

MOTOTRBO, as all computing systems, is composed of hardware and software. The value of hardware is significant, but static. The value of software, on the other hand, keeps growing over time. Access the latest and greatest features and functionality available with each software release for added capabilities, security, and reliability. This increases the value of your investment with every update.

### Access to Premium Software Features

Experience the power of the MOTOTRBO platform and go beyond voice with access to premium software features, previously sold a la carte. The features you need to increase productivity aren't wishful thinking - they're a smart reality. Enable the right premium software features for the right teams, so they can be safer and more efficient when it matters most.



### The Value of Hardware Repair

Our two-way radios and infrastructure are built for superior performance. With expert hardware repair, all radios and infrastructure are returned to factory specifications. Service centers are certified to comply with ISO9001.

## COMPLEXITY MANAGED, CALM PREVAILS



**Advance Replacement** for Network Hardware Repair is a repair exchange service for Motorola Solutions repeaters & Capacity Max system servers. This add-on service is available for systems so you can stay productive and run an efficient operation.



**Accidental Damage** offers you full coverage to keep you worry free. Accidental Damage is an add-on service that provides you with additional coverage for your two-way radios for repair and replacement beyond normal wear and tear.



**Network Monitoring** is an add-on service for MOTOTRBO systems to help you monitor and update your network to improve response and continuity of your Capacity Max system.

# SERVICE TOOLS

## FLEET MANAGEMENT

### CUSTOMER PROGRAMMING SOFTWARE

The MOTOTRBO Customer Programming Software (CPS) provides complete access to the configuration of your radio. Update firmware, enable features, change talkgroups, add language packs and upload voice announcements to your radio from your desktop.

### RADIO MANAGEMENT

As an add-on to the CPS software, Radio Management gives you the capability to programme radios in batches to standardised templates. Reduce errors, organise large fleets more efficiently, and streamline large-scale updates.

### OVER-THE-AIR PROGRAMMING

Over-the-Air Programming (OTAP) allows you to update radios remotely, either via Wi-Fi or over the MOTOTRBO network. Updates can be centrally managed and scheduled to minimise disruption to your business-critical communications.

### RADIO CENTRAL

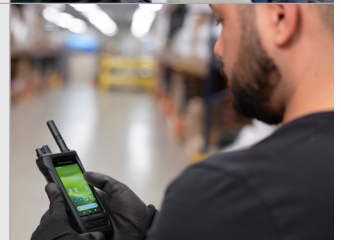
Radio Central is the latest fleet management software from Motorola Solutions. With RadioCentral you can manage and program multiple smart radios at a time. Cloud hosting allows smart radio codeplugs to be stored in a centralised database server, enabling remote configuration of data and remote programming of smart radios. With batch programming, jobs may be scheduled through an Over-The-Air-Programming (OTAP) connection, or USB or via Wi-Fi connection.

### MYVIEW PORTAL

MyView Portal is a web-based platform that gives you a transparent, single source view for system and service delivery information to help make smarter, faster and more proactive decisions to keep your network running smoothly and effectively.

### IMPRES FLEET MANAGEMENT

Regularly monitor the health and status of your radio fleet. By collecting data from each battery, you can now see recommendations on which batteries need replacing so that you can better optimise your battery spend over the lifetime of your radio fleet.





# BUSINESSES AROUND THE WORLD TRUST MOTOTRBO TO TRANSFORM THE WAY THEY WORK

Today, from the factory floor to the power line, MOTOTRBO radios are helping people work more efficiently, productively and safely. MOTOTRBO delivers the game-changing advantages of digital technology – from superb audio to expansive coverage – along with business-essential systems, applications and accessories that unleash the power of the radio.

MOTOTRBO puts the right device into the hands of the right user, to empower your workforce and transform your enterprise.



# MOTOTRBO PORTABLE RADIO FEATURES

| FEATURE  | DESCRIPTION   | DP1000 SERIES                                  |                               | DP2000e SERIES     |                               | DP3000e SERIES                |                               | DP4000e SERIES                |                    |                        | DP4000 Ex SERIES              |                               | ION SMART RADIO               | SL SERIES                     |                               |                               |
|--|---|--|-------------------------------|--------------------|-------------------------------|-------------------------------|-------------------------------|-------------------------------|--------------------|------------------------|-------------------------------|-------------------------------|-------------------------------|-------------------------------|-------------------------------|-------------------------------|
|  |   | DP1400   | DP2400e                       | DP2600e            | DP3441e                       | DP3661e                       | DP4000e/DP4401e               | DP4600e/DP4601e               | DP4800e/DP4801e    | DP4401 Ex              | DP4801 Ex                     | Ion Smart Radio               | SL1600                        | SL2600                        | SL4010e                       |                               |
| <b>GENERAL SPECIFICATIONS</b>                  |   |  |                               |                    |                               |                               |                               |                               |                    |                        |                               |                               |                               |                               |                               |                               |
| <b>Protocol</b>                                | DMR digital or analogue communication                                 | Analogue/Digital or Analogue Only <sup>2</sup> | Analogue/Digital              |                    | Analogue/Digital              |                               | Analogue/Digital              |                               |                    | Analogue/Digital       |                               | Analogue/Digital              | Analogue/Digital              | Analogue/Digital              | Digital                       |                               |
| <b>Frequency Range</b>                         | Capable of operating in the following frequency ranges                | VHF & UHF <sup>1</sup>                         | VHF & UHF <sup>1</sup>        |                    | VHF & UHF <sup>1</sup>        |                               | VHF & UHF <sup>1</sup>        |                               |                    | VHF & UHF <sup>1</sup> |                               | UHF                           | VHF & UHF <sup>1</sup>        | VHF & UHF <sup>1</sup>        | UHF <sup>1</sup>              |                               |
| <b>Max. Power Output</b>                       | Radio's full power rating   | 4W UHF/5W VHF                                  | 4W UHF/5W VHF                 |                    | 4W UHF/5W VHF                 |                               | 4W UHF/5W VHF                 |                               |                    | 1W UHF/VHF             |                               | 4W                            | 2W (An)/3W (Dig)              | 2W (an)/3W (dig)              | 3W                            |                               |
| <b>Max. Channel Capacity</b>                   | Programmable channel capacity   | 32   | 32                            | 128                | 32                            | 1000                          | 32                            | 1000                          | 1000               | 32                     | 1000                          | 1000                          | 99                            | 256                           | 1000                          |                               |
| <b>Display</b>                                 | Displays provide easy access to advanced features                     | No   | No                            | 2 Line Monochrome  | No                            | 5 Line Colour                 | No                            | 5 Line Colour                 | 5 Line Colour      | No                     | 5 Line Colour                 | Captive touchscreen           | Active View                   | 2 line OLED                   | 5 Line Colour                 |                               |
| <b>Keypad</b>                                  | Keypads provide access to radio controls, texting and telephony       | No   | No                            | Menu Buttons       | No                            | Menu Buttons                  | No                            | Menu Buttons                  | Full Keypad        | No                     | Full Keypad                   | Captive touchscreen           | No                            | 4 virtual buttons             | Full Keypad                   |                               |
| <b>Integrated GPS &amp; GLONASS</b>            | Embedded GPS & GLONASS receiver for location monitoring               | No   | No                            |                    | Yes                           |                               | Yes <sup>2</sup>              |                               |                    | GPS Only               |                               | Yes                           | No                            |                               |                               |                               |
| <b>Integrated Bluetooth Capability</b>         | Wireless connection for audio accessories or data comms               | No   | No                            |                    | Audio and Data                |                               | Audio and Data <sup>2</sup>   |                               |                    | No                     |                               | Yes                           | No                            | Audio and Data                | Audio and Data                |                               |
| <b>Permanent Bluetooth Discovery</b>           | "Always on" mode used by some location tracking applications          | No   | No                            |                    | Yes                           |                               | Yes <sup>2</sup>              |                               |                    | No                     |                               | Yes                           | No                            | Option                        | Yes                           |                               |
| <b>Dedicated Emergency Button</b>              | Orange programmable button for one-touch emergency calling            | No   | No                            |                    | Yes                           |                               | Yes                           |                               |                    | Yes                    |                               | Yes                           | No                            | No                            | Yes                           |                               |
| <b>Programmable Buttons</b>                    | Allow access to most often used features with one press               | 2  | 2                             | 4                  | 2                             | 4                             | 3                             | 5                             | 5                  | 3                      | 5                             | 3                             | 1                             | 1                             | 2                             |                               |
| <b>Option Board Capability</b>                 | Supports option boards for third party applications                   | No   | No                            |                    | Yes                           |                               | Yes                           |                               |                    | No                     | Yes                           | No                            | No                            | No                            | Yes                           |                               |
| <b>IMPRES Audio Compatible</b>                 | IMPRES audio ensures your voice is heard clearer and louder           | No   | Yes                           |                    | Yes                           |                               | Yes                           |                               |                    | Yes                    |                               | Yes                           | No                            |                               |                               |                               |
| <b>IMPRES Energy Compatible</b>                | Use IMPRES batteries for longer life and optimal performance          | No   | Yes                           |                    | Yes                           |                               | Yes                           |                               |                    | Yes                    |                               | Yes                           | No                            |                               |                               |                               |
| <b>ATEX / IEC Ex Certified</b>                 | Certified for use in potentially explosive environments               | No   | No                            |                    | No                            |                               | No                            |                               |                    | Yes                    |                               | No                            | No                            |                               |                               |                               |
| <b>IP Rating</b>                               | Rated sealing for dust and water ingress                              | IP54   | IP67                          |                    | IP68                          |                               | IP68                          |                               |                    | IP67                   |                               | IP68                          | IP54                          |                               |                               |                               |
| <b>Dimensions (HxWxL)</b>                      | Physical size   | 128 x 62 x 42 mm <sup>4</sup>                  | 122 x 56 x 36 mm <sup>4</sup> |                    | 100 x 63 x 30 mm <sup>4</sup> | 100 x 63 x 36 mm <sup>4</sup> | 130 x 55 x 34 mm <sup>4</sup> | 130 x 55 x 36 mm <sup>4</sup> |                    |                        | 138 x 57 x 38 mm <sup>4</sup> | 138 x 57 x 40 mm <sup>4</sup> | 173 x 70 x 29 mm <sup>4</sup> | 126 x 55 x 22 mm <sup>4</sup> | 126 x 55 x 23 mm <sup>4</sup> | 121 x 55 x 20 mm <sup>4</sup> |
| <b>Dimensions (Weight)</b>                     | Physical weight   | 341 g  | 265 g                         | 282 g <sup>3</sup> | 254 g <sup>4</sup>            | 290 g <sup>4</sup>            | 295 g <sup>4</sup>            | 330 g <sup>4</sup>            | 330 g <sup>4</sup> | 456 g <sup>4</sup>     | 456 g <sup>4</sup>            | 414 g <sup>4</sup>            | 169 g <sup>4</sup>            | 190 g <sup>4</sup>            | 154 g <sup>4</sup>            |                               |
| <b>FEATURES AND FUNCTIONS</b>                  |   |  |                               |                    |                               |                               |                               |                               |                    |                        |                               |                               |                               |                               |                               |                               |
| <b>Intelligent Audio</b>                       | Automatic volume control based on background noise levels             | No   | Yes                           |                    | Yes                           |                               | Yes                           |                               |                    | Yes                    |                               | Yes                           | No                            | Yes                           | Yes                           |                               |
| <b>Emergency Alarm</b>                         | Radio can initiate a Emergency call process                           | Yes  | Yes                           |                    | Yes                           |                               | Yes                           |                               |                    | Yes                    |                               | Yes                           | Yes                           |                               |                               |                               |
| <b>Lone Worker</b>                             | Initiates emergency if user does not respond to periodic alerts       | Yes  | Yes                           |                    | Yes                           |                               | Yes                           |                               |                    | Yes                    |                               | Yes                           | Yes                           |                               |                               |                               |
| <b>Remote Monitor</b>                          | Radio can remotely activate another radio's microphone                | Decode Only                                    | Decode Only                   | Yes                | Yes                           |                               | Decode Only                   | Yes                           |                    | Yes                    |                               | Yes                           | Decode Only                   | Yes                           | Yes                           |                               |
| <b>Freeform Text Messaging</b>                 | User can enter and send free-form text messages                       | No   | No                            |                    | No                            |                               | No                            | No                            | Yes                | No                     | Yes                           | Yes                           | No                            | No                            | Yes                           |                               |
| <b>Pre-programmed Text Messaging</b>           | Radio can send pre-programmed text messages                           | Yes  | Yes                           |                    | Yes                           |                               | Yes                           |                               |                    | Yes                    |                               | Yes                           | Yes                           |                               |                               |                               |
| <b>Vibrate Alert</b>                           | Vibrate silently alerts the user to an incoming call                  | No   | Option                        |                    | No                            |                               | Option                        |                               |                    | No                     |                               | No                            | No                            | No                            | Yes                           |                               |
| <b>Covert Mode</b>                             | Disable display, LEDs and audible tones for ultimate discretion       | No   | No                            |                    | No                            |                               | No                            |                               |                    | No                     |                               | No                            | No                            | Yes                           | Yes                           |                               |
| <b>Digital Telephone Patch</b>                 | Ability to connect to telephone system (requires additional hardware) | No   | Option                        |                    | Yes                           |                               | Yes                           |                               |                    | Yes                    |                               | No                            | No                            | Option                        | Yes                           |                               |
| <b>Transmit Interrupt Decode</b>               | Radio transmissions can be interrupted by other radios                | Yes  | Yes                           |                    | Yes                           |                               | Yes                           |                               |                    | Yes                    |                               | Yes                           | Yes                           | Option                        | Yes                           |                               |
| <b>Transmit Interrupt Encode</b>               | Radio can interrupt transmissions from other radios                   | No   | Yes                           |                    | Yes                           |                               | Yes                           |                               |                    | Yes                    |                               | Yes                           | No                            | Option                        | Yes                           |                               |
| <b>Basic Privacy</b>                           | MOTOTRBO 16-bit encryption for protection against eavesdropping       | Yes  | Yes                           |                    | Yes                           |                               | Yes                           |                               |                    | Yes                    |                               | Yes                           | Yes                           |                               |                               |                               |
| <b>Enhanced Privacy</b>                        | MOTOTRBO 40-bit encryption for more robust protection                 | No   | Yes                           |                    | Yes                           |                               | Yes                           |                               |                    | Yes                    |                               | Yes                           | No                            | Yes                           | Yes                           |                               |
| <b>AES256 Encryption</b>                       | Advanced Encryption Standard (AES) 256-bit encryption                 | No   | No                            |                    | Option                        |                               | Option                        |                               |                    | Option                 |                               | Option                        | No                            | No                            | Option                        |                               |
| <b>Default Voice Announcement</b>              | Audible confirmation of selected operations of the radio              | Yes  | Yes                           |                    | Yes                           |                               | Yes                           |                               |                    | Yes                    |                               | Yes (Text to Speech)          | Yes                           |                               |                               |                               |
| <b>Programmable Voice Announcement</b>         | Ability to use customised recordings for voice announcements          | Yes  | Yes                           |                    | Yes                           |                               | Yes                           |                               |                    | Yes                    |                               | Yes (Text to Speech)          | Yes                           |                               |                               |                               |
| <b>Radio Management</b>                        | RM provides centralised radio configuration and code plug management  | Yes  | Yes                           |                    | Yes                           |                               | Yes                           |                               |                    | Yes                    |                               | Yes                           | Yes                           |                               |                               |                               |
| <b>Over the Air Programming (OTAP)</b>         | Remote, over-air programming using Radio Management                   | No   | Yes                           |                    | Yes                           |                               | Yes                           |                               |                    | Yes                    |                               | Yes                           | No                            | Yes                           | Yes                           |                               |
| <b>Restricted Access to System</b>             | Prevents unauthorised users from communicating through the repeater   | Yes  | Yes                           |                    | Yes                           |                               | Yes                           |                               |                    | Yes                    |                               | Yes                           | Yes                           |                               |                               |                               |
| <b>Radio Enable/Disable</b>                    | Radio can remotely disable and re-enable another radio                | Decode Only                                    | Decode Only                   | Decode Only        | Decode Only                   | Yes                           | Decode Only                   | Yes                           | Yes                | Decode Only            | Yes                           | Yes                           | Decode Only                   | Yes                           | Yes                           |                               |
| <b>Integrated Mandown</b>                      | Enhance personnel safety by monitoring movement                       | No   | No                            |                    | Yes                           |                               | Option                        |                               |                    | Yes                    |                               | Yes                           | No                            | No                            | Yes                           |                               |
| <b>Dual Capacity Direct Mode</b>               | Use both TDMA time slots to double capacity without using a repeater  | Yes  | Yes                           |                    | Yes                           |                               | Yes                           |                               |                    | Yes                    |                               | Yes                           | Yes                           |                               |                               |                               |
| <b>SYSTEM CONFIGURATIONS</b>                   |   |  |                               |                    |                               |                               |                               |                               |                    |                        |                               |                               |                               |                               |                               |                               |
| <b>Direct Mode Operation</b>                   | Direct radio-to-radio operation                                       | Yes  | Yes                           |                    | Yes                           |                               | Yes                           |                               |                    | Yes                    |                               | Yes                           | Yes                           |                               |                               |                               |
| <b>Single-Site Conventional</b>                | Single site conventional operation (channel selection by users)       | Yes  | Yes                           |                    | Yes                           |                               | Yes                           |                               |                    | Yes                    |                               | Yes                           | Yes                           |                               |                               |                               |
| <b>IP Site Connect</b>                         | Multi-site conventional operation (channel selection by users)        | Option   | Yes                           |                    | Yes                           |                               | Yes                           |                               |                    | Yes                    |                               | Yes                           | Option                        | Yes                           | Yes                           |                               |
| <b>Capacity Plus (single- and multi- site)</b> | Single site trunking (channel selection managed by system)            | No   | Option                        |                    | Yes                           |                               | Yes                           |                               |                    | Yes                    |                               | Yes                           | No                            | Option                        | Yes                           |                               |
| <b>Capacity Max</b>                            | Multi-site DMR Tier III trunking with dedicated control channel       | No   | No                            |                    | Option                        |                               | Option                        |                               |                    | Option                 |                               | Yes                           | No                            | No                            | Yes                           |                               |



# MOTOTRBO MOBILE RADIO FEATURES

| FEATURE  | DESCRIPTION  | DM1000 SERIES                    |                   | DM2000 SERIES                    | DM4000e SERIES                   |                    |
|--|--|----------------------------------|-------------------|----------------------------------|----------------------------------|--------------------|
|  |  | DM1400                           | DM1600            | DM2600                           | DM4400e/DM4401e                  | DM4600e/DM4601e    |
| <b>GENERAL SPECIFICATIONS</b>                  |  |                                  |                   |                                  |                                  |                    |
| <b>Protocol</b>                                | DMR digital or analogue communication                                    | Analogue/Digital <sup>5</sup>    |                   | Analogue/Digital                 | Analogue/Digital                 |                    |
| <b>Frequency Range</b>                         | Capable of operating in the following frequency ranges                   | VHF & UHF <sup>1</sup>           |                   | VHF & UHF <sup>1</sup>           | VHF & UHF <sup>1</sup>           |                    |
| <b>Max. Power Output</b>                       | Radio's full power rating  | 25W or 45W VHF<br>25W or 40W UHF |                   | 25W or 45W VHF<br>25W or 40W UHF | 25W or 45W VHF<br>25W or 40W UHF |                    |
| <b>Max. Channel Capacity</b>                   | Programmable channel capacity  | 16                               | 160               | 256                              | 99                               | 1000               |
| <b>Display</b>                                 | Displays provide easy access to advanced features                        | 2-digit numeric                  | 2 Line Monochrome | 2 Line Monochrome                | 2-digit numeric                  | 4 line full colour |
| <b>Keypad</b>                                  | Keypads provide access to radio controls, texting and telephony          | No                               | Menu Buttons      | Menu Buttons                     | No                               | Menu Buttons       |
| <b>Integrated GPS</b>                          | Embedded GPS receiver for location monitoring                            | No                               |                   | No                               | Yes <sup>2</sup>                 |                    |
| <b>Integrated Bluetooth Capability</b>         | Wireless connection for audio accessories or data comms                  | No                               |                   | No                               | Audio and Data <sup>2</sup>      |                    |
| <b>Permanent Bluetooth Discovery</b>           | "Always on" mode used by some location tracking applications             | No                               |                   | No                               | No                               |                    |
| <b>Dedicated Emergency Button</b>              | Orange programmable button for one-touch emergency calling               | No                               |                   | No                               | No                               |                    |
| <b>Programmable Buttons</b>                    | Allow access to most often used features with one press                  | 2                                | 4                 | 4                                | 4                                |                    |
| <b>Digital DMR Signalling</b>                  | DMR standard digital voice communications                                | Yes <sup>5</sup>                 |                   | Yes                              | Yes                              |                    |
| <b>PL / DPL Signalling</b>                     | Analogue Private Line / Digital Private Line compatible                  | Yes                              |                   | Yes                              | Yes                              |                    |
| <b>Quick Call II Signalling</b>                | Analogue Quick Call II compatible  | Yes                              |                   | Yes                              | Yes                              |                    |
| <b>MDC Signalling</b>                          | Analogue MDC compatible  | Yes                              |                   | Yes                              | Yes                              |                    |
| <b>5 Tone Signalling</b>                       | Analogue 5 tone compatible   | No                               |                   | Yes                              | Yes                              |                    |
| <b>DTMF Hot Keypad</b>                         | DTMF tone compatible   | Yes <sup>6</sup>                 |                   | Yes <sup>6</sup>                 | Yes <sup>6</sup>                 |                    |
| <b>MPT1327 Signalling</b>                      | Analogue MPT1327 compatible (requires option board)                      | No                               |                   | No                               | Option                           |                    |
| <b>Option Board Capability</b>                 | Supports option boards for third party applications                      | No                               |                   | Yes                              | Yes                              |                    |
| <b>IMPRES Audio Compatible</b>                 | IMPRES audio ensures your voice is heard clearer and louder              | No                               |                   | No                               | Yes                              |                    |
| <b>IP Rating</b>                               | Rated sealing for dust and water ingress                                 | IP54                             |                   | IP54                             | IP54                             |                    |
| <b>Dimensions (HxWxL)</b>                      | Physical size  | 44 x 169 x 134 mm                |                   | 44 x 169 x 134 mm                | 53 x 175 x 206 mm                |                    |
| <b>Dimensions (Weight)</b>                     | Physical weight  | 1.3 kg                           |                   | 1.3 kg                           | 1.8 kg                           |                    |
| <b>FEATURES AND FUNCTIONS</b>                  |  |                                  |                   |                                  |                                  |                    |
| <b>Intelligent Audio</b>                       | Automatic volume control based on background noise levels                | No                               |                   | Yes                              | Yes                              |                    |
| <b>Emergency Alarm</b>                         | Radio can initiate a Emergency call process                              | Yes                              |                   | Yes                              | Yes                              |                    |
| <b>Lone Worker</b>                             | Initiates emergency if user does not respond to periodic alerts          | Yes                              |                   | Yes                              | Yes                              |                    |
| <b>Remote Monitor</b>                          | Radio can remotely activate another radio's microphone                   | Decode Only                      |                   | Yes                              | Yes                              |                    |
| <b>Freeform Text Messaging</b>                 | User can enter and send free-form text messages                          | No                               |                   | No                               | Yes <sup>6</sup>                 |                    |
| <b>Pre-programmed Text Messaging</b>           | Radio can send pre-programmed text messages                              | Yes                              |                   | Yes                              | Yes                              |                    |
| <b>Digital Telephone Patch</b>                 | Ability to connect to telephone system (requires additional hardware)    | No                               |                   | Option                           | Yes                              |                    |
| <b>Transmit Interrupt Decode</b>               | Radio transmissions can be interrupted by other radios                   | Yes                              |                   | Yes                              | Yes                              |                    |
| <b>Transmit Interrupt Encode</b>               | Radio can interrupt transmissions from other radios                      | No                               |                   | Yes                              | Yes                              |                    |
| <b>Basic Privacy</b>                           | MOTOTRBO 16-bit encryption for protection against eavesdropping          | Yes                              |                   | Yes                              | Yes                              |                    |
| <b>Enhanced Privacy</b>                        | MOTOTRBO 40-bit encryption for more robust protection                    | No                               |                   | Yes                              | Yes                              |                    |
| <b>AES256 Encryption</b>                       | Advanced Encryption Standard (AES) 256-bit encryption                    | No                               |                   | No                               | Option                           |                    |
| <b>Default Voice Announcement</b>              | Audible confirmation of selected operations of the radio                 | Yes                              |                   | Yes                              | Yes                              |                    |
| <b>Programmable Voice Announcement</b>         | Ability to use customised recordings for voice announcements             | Yes                              |                   | Yes                              | Yes                              |                    |
| <b>Radio Management</b>                        | RM provides centralised radio configuration and code plug management     | Yes                              |                   | Yes                              | Yes                              |                    |
| <b>Over the Air Programming (OTAP)</b>         | Remote, over-air programming using Radio Management                      | No                               |                   | Yes                              | Yes                              |                    |
| <b>Restricted Access to System</b>             | Prevents unauthorised users from communicating through the repeater      | Yes                              |                   | Yes                              | Yes                              |                    |
| <b>Radio Enable/Disable</b>                    | Radio can remotely disable and re-enable another radio                   | Decode Only                      |                   | Yes                              | Decode Only                      | Yes                |
| <b>Dual Capacity Direct Mode</b>               | Use both TDMA time slots to double capacity without using a repeater     | Yes                              |                   | Yes                              | Yes                              |                    |
| <b>Fixed Installation</b>                      | Mobile radios can be used in a fixed installation such as a control room | Yes                              |                   | Yes                              | Yes                              | Yes                |
| <b>Control Station</b>                         | Mobile acts as RF link between Application Server and radio network      | No                               |                   | Yes                              | Yes                              | Yes                |
| <b>Remote Mount Control Head</b>               | Controls and display can be located separately from radio chassis        | No                               |                   | No                               | Option                           |                    |
| <b>SYSTEM CONFIGURATIONS</b>                   |  |                                  |                   |                                  |                                  |                    |
| <b>Direct Mode Operation</b>                   | Direct radio-to-radio operation  | Yes                              |                   | Yes                              | Yes                              |                    |
| <b>Single-Site Conventional</b>                | Single site conventional operation (channel selection by users)          | Yes                              |                   | Yes                              | Yes                              |                    |
| <b>IP Site Connect</b>                         | Multi-site conventional operation (channel selection by users)           | Option                           |                   | Yes                              | Yes                              |                    |
| <b>Capacity Plus (single- and multi- site)</b> | Single site trunking (channel selection managed by system)               | No                               |                   | Option                           | Yes                              |                    |
| <b>Capacity Max</b>                            | Multi-site DMR Tier III trunking with dedicated control channel          | No                               |                   | No                               | Option                           |                    |

<sup>1</sup> VHF frequency range supported is 136-174MHz. UHF frequency range supported is 403-527MHz, except DP1000, DP4000 Ex, SL Series, DM1000 and DM2000 Series when UHF range is 403-470MHz

<sup>2</sup> Integrated Bluetooth and GPS are supported on DP4x01e & DM4601e only

<sup>3</sup> Based on NiMH battery

<sup>4</sup> Based on standard Li-Ion battery

<sup>5</sup> Analogue-only models of DP1400, DM1400 and DM1600 also available. Analogue models can be upgraded to MOTOTRBO digital by purchasing a software license

<sup>6</sup> Requires keypad microphone

# MOTOTRBO SYSTEM COMPARISON TABLE

VENT TANK WHEN UNLOADING

|   | DIRECT MODE / DUAL CAPACITY DIRECT MODE | SINGLE SITE CONVENTIONAL |
|---|---|--------------------------|
| <b>SITES</b>  | 1                                       | 1                        |
| <b>REPEATERS (MAX)</b>  | 0 / 1                                   | 1                        |
| <b>CHANNELS / SITE (TRAFFIC + DATA REVERT)</b>                | 1 / 2 + 0                               | 2 + 0                    |
| <b>MAX USERS / SITE</b>                                       | 100 / 200                               | 200                      |
| <b>RADIOS<sup>2</sup> (MAX)</b>                               | 100 / 200                               | 200                      |
| <b>TRUNKING</b>   | No                                      | No                       |
| <b>SEPARATE CONTROLLER</b>                                    | n/a                                     | n/a                      |
| <b>CONTROLLER REDUNDANCY</b>                                  | n/a                                     | n/a                      |
| <b>SUBSCRIBER ACCESS CONTROL</b>                              | No                                      | No                       |
| <b>SUBSCRIBER AUTHENTICATION</b>                              | No                                      | No                       |
| <b>ENHANCED TRAFFIC CHANNEL ACCESS (COLLISION MITIGATION)</b> | No                                      | Yes                      |
| <b>PRIORITISATION</b>   | No                                      | No                       |
| <b>STORE &amp; FORWARD TEXTS</b>                              | No                                      | No                       |
| <b>QUEUING (LEVELS)</b>                                       | No                                      | No                       |
| <b>TRANSMIT INTERRUPT</b>                                     | Yes                                     | Yes                      |
| <b>REMOTE MONITOR</b>   | Yes                                     | Yes                      |
| <b>RADIO ENABLE/DISABLE (STUN/REVIVE)</b>                     | Yes                                     | Yes                      |

<sup>1</sup>SLR repeaters can be used for Extended Range Direct Mode

<sup>2</sup>Maximum capacity, based on standardisation low traffic call model

# GATX 89653

LD LMT 191200

LB 86 750 KG

LT WT 71800

LB 32 550 KG NEW 10-94



| IP SITE CONNECT | CAPACITY PLUS<br>(SINGLE- & MULTI-SITE)                  | CAPACITY MAX       |
|-----------------|--|--------------------|
| 1-15            | 1-15   | 1-250              |
| 15              | Single site: 8 voice + 12 data revert<br>Multi-site: 165 | 5250               |
| 2 + 0           | 16 + 24  | 29 + 12            |
| 200             | 1,600  | 3,000              |
| 200             | 24,000   | 100,000            |
| No              | Yes  | Yes – DMR Tier III |
| n/a             | No   | Yes                |
| n/a             | n/a  | Yes                |
| No              | No   | Yes                |
| RAS             | RAS  | Yes                |
| No              | No   | Yes                |
| No              | No   | Yes                |
| No              | No   | No                 |
| No              | No   | Yes (10)           |
| Yes             | Yes  | Yes                |
| Yes             | Yes  | Yes                |
| Yes             | Yes  | Yes                |



For more information, please visit: [motorolasolutions.com/MOTOTRBO](https://motorolasolutions.com/MOTOTRBO)

Motorola Solutions Ltd. Nova South, 160 Victoria Street, London, SW1E 5LB, United Kingdom.

Availability is subject to individual country law and regulations. All specifications shown are typical unless otherwise stated and are subject to change without notice.

Whilst care has been taken to ensure the accuracy of the information contained in this bulletin, Motorola Solutions retains the right to make changes at any time without notice.

MOTOROLA, MOTO, MOTOROLA SOLUTIONS and the Stylized M Logo are trademarks or registered trademarks of Motorola Trademark Holdings, LLC and are used under license. Wi-Fi is a registered trademark of the Wi-Fi Alliance®. All other trademarks are the property of their respective owners. © 2021 Motorola Solutions, Inc. All rights reserved. (03-21)